

RLC NEWS



"Going Green" to better everyone.

Roark Landscaping is currently converting all of our mowers to run on propane, and will continue to implement changes that supports our environment.

March 2009

We are still collecting information for auto-debit and credit card payments. If you are interested in either of these convenient payment options, please contact Cheryl at 294-3322 or e-mail to: cheryl@rlctulsa.com so that we can send you the appropriate forms and let us help you get started simplifying your life today!

Roark
LANDSCAPING
corporation

Turf & Ornamental by Doug Cook

Turf

Currently we are in the middle of pre emerge applications. The pre emergent is split into two applications to provide better and longer protection. This application is



designed to prevent crabgrass, goose grass, foxtail, and a few other grassy weeds. After it is applied and watered into the soil, the pre emergent forms a barrier in the ground that kills the crabgrass as it starts to germinate in the soil. It is important that this application is watered into the ground after applied and that the soil in the yard is not disturbed by digging or aeration. If you wish to have your Bermuda aerated this spring, please call in to have it done as soon as possible so that we can have your pre emergent done after, instead of before aeration. This round of treatment also contains a chemical to take care of broadleaf weeds present in the turf. This pre emergent will not control nut sedge, Johnson, or Dallas grass. Currently there isn't a pre emergent available to control Dallas or Johnson grass. They must be controlled through continuous spot treatments. There is a pre emergent that is available for nut sedge. This treatment is an extra application that you can order. It will provide 8-

10 weeks protection from nut sedge. If you wish to have this application done you will need to call the office to schedule it.

Shrubs

If you are signed up on the plant health care program, we are starting the fungicide and the dormant oil applications. Depending on the species of shrubs present in your yard, you will be receiving one or both of these applications. The Fungicide is applied as a preventative to protect the shrubs against powdery mildew and leaf spot. We use some of the best fungicides that are available. These fungicides have a systemic mode of action where they are drawn into the plant to help protect it for a period of time. The Dormant oil is high-grade agricultural crop oil mixed with an insecticide. The Oil itself smothers insects and the eggs they laid last fall. The insecticide has a systemic mode of action to help provide longer protection. This treatment is great for different types of scale and mites. Call the office if you are not on the plant health care program and would like to have any of these applications.



OUR MISSION

It is the mission and continuous goal of Roark Landscaping Corporation to provide the customer with efficient, prompt, courteous, and complete landscape service while striving to fulfill the needs of each employee of the company. In turn, this will keep prices competitive, lower operating costs, create a grateful clientele, and thus lead to referrals and company growth.



5809 S. 107th E. Ave
Tulsa, OK 74146

Phone: 918-294-3222
Fax: 918-294-3322

Oklahoma Proven--A Great Source for Landscape Inspiration by Terri Veal

Today the temperature was a balmy 80 degrees, but just 3 days ago we had a 19-degree wind chill. Spring is definitely in the air, but unfortunately it is still winter. That makes March a perfect month for planning that perfect garden. When it's still too cold outside to do the things you want out in your yard, why not take the time instead to visit a great website that should provide you with some inspiration.



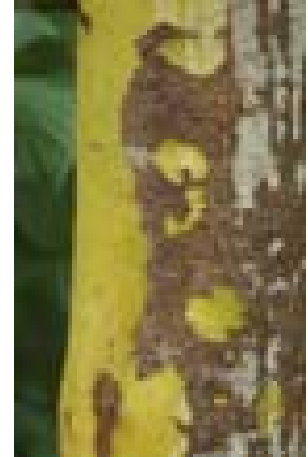
Want to know some plants that work well in Oklahoma & you won't find in every other garden on the block? Check out the 2009 Oklahoma Proven plants on their website.

Each year Oklahoma State University makes their recommendations for a tree, shrub,

perennial & annual that performs well in our area. This year's Collector's Choice is a tree I had never

heard of before but am really curious about, Persian parrotia. They describe it as a small tree with deep-maroon flowers appearing in late winter, reddish-colored new growth, turning brilliant yellow or orange in the fall. I'm particularly interested in the multi-colored exfoliating bark as the tree matures. This gives the tree year-round interest which always appeals to me. The website lists Oklahoma Proven plants for previous years and is a great source of ideas for unique additions to your landscape.

So after you've taken care of those winter gardening chores, take some time to make a wish list of new plants you'd like to try. Of course, if you'd like assistance locating these plants or finding a place in your landscape for them, we'd be happy to help!



Maintenance by Brian Schmittlein

March is upon us and soon it will be time to start mowing once again. During the month of February, the crews trimmed back the plants as needed and removed any of the winter weeds from the flowerbeds. The plants and weeds have already started growing this season, which seems to be some pretty early. The downside of enjoying this warmer than usual temperatures, is that the springtime rain has not come early. In fact, we are extremely dry for the plants and turf to start growing. There is some rain in the forecast as of right now, but if we do not get any rain soon, you might want to get your sprinkler system powered up a little early if you haven't done so already. Be careful though, we are still in March so if we do have freezing temperatures, you will run the risk of your backflow freezing and cracking.

In the month of March, we will do a final cleaning of the flowerbeds so they are ready for spring. Now is a good time to mulch the flowerbeds or add mulch to obtain the proper depth of approximately 3", depending on the type of mulch.

We are putting together the mowing and bed maintenance schedules for the upcoming season. There have been some changes this year on the scheduling to further save time and fuel on the different routes. Also throughout the year, we are converting our push mowers over to propane. We have finished our prototype and tested it and have worked the "kinks" out so we will begin converting the others as we get into the season.

If there are any changes you would like to make in the appearance and maintenance of the plants please let us know. All of our foreman and about 95% of the crewmembers are returning this year plus we have added many new faces but everyone is anxious to get the season started.

We are proud to offer e-mail invoicing to reduce paper waste. If you are interested in joining our environmentally friendly efforts, simply send us an e-mail indicating your preferences to cheryl@rlctulsa.com